

CYMATHERAPY®

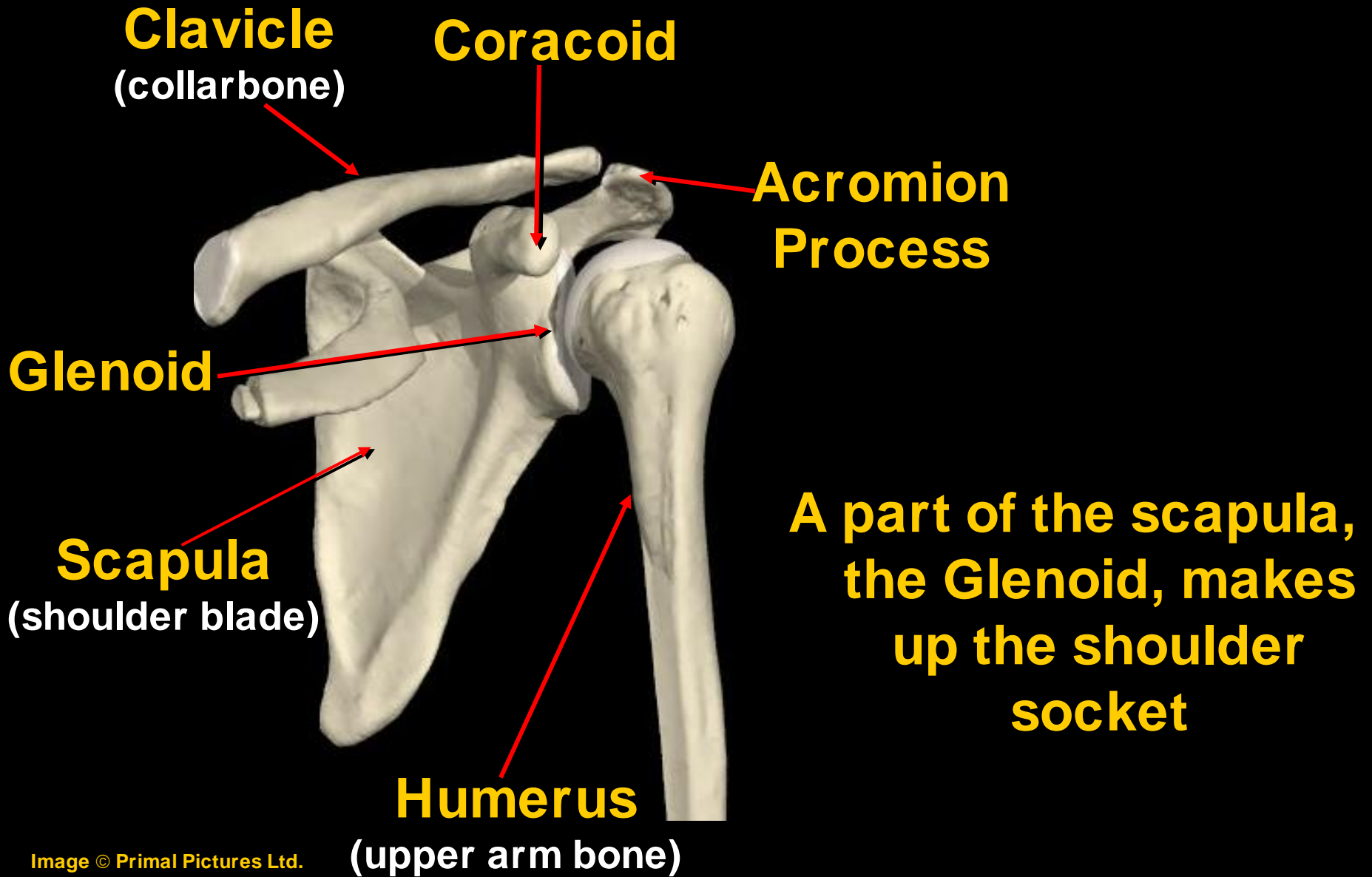
Orthopedic Solutions

The Shoulder



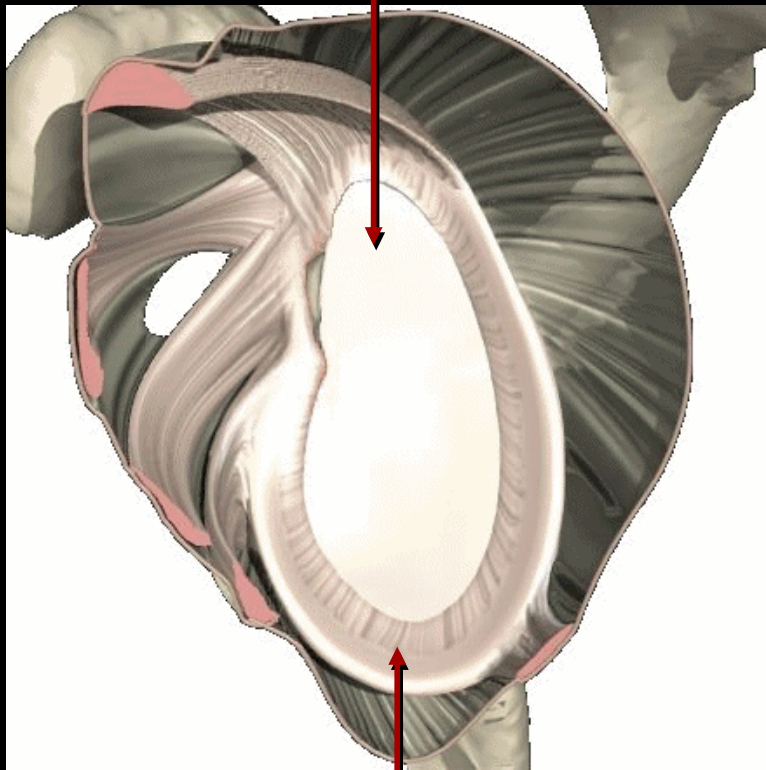
~ Sound Advice in Sports Medicine ~

Bones of the Shoulder Joint



Socket of the Shoulder Joint

Glenoid



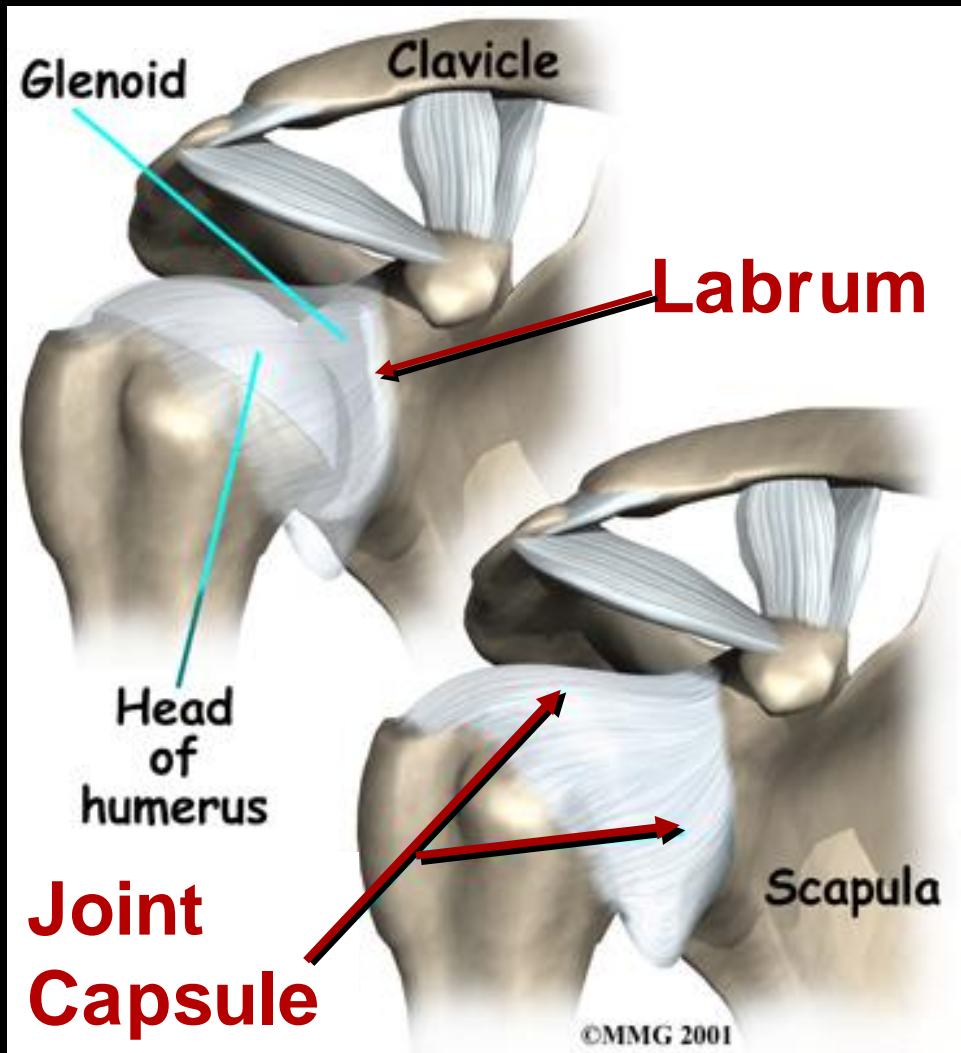
Labrum

The Glenoid is a very shallow socket (like a golf ball on a golf tee)

- It is lined with soft fibrous tissue called the labrum

The labrum makes the socket into a cup molding itself to the humerus

Static Stabilizers of the Shoulder



Static Stabilizers
Joint capsule
Labrum



Dynamic Stabilizers of the Shoulder

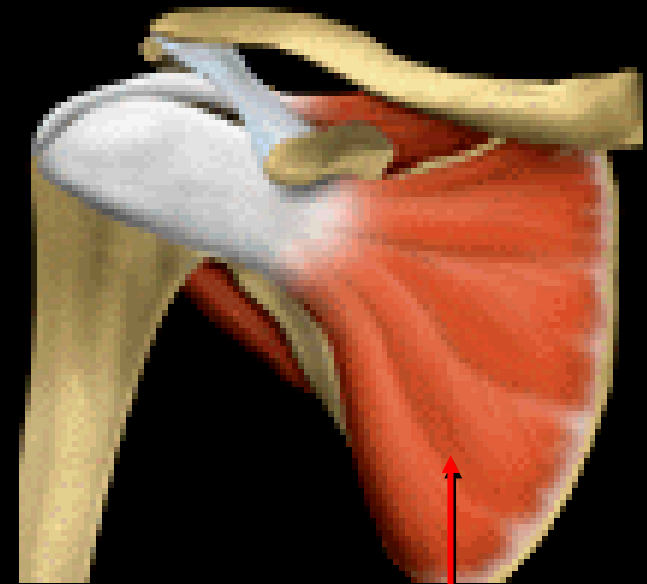
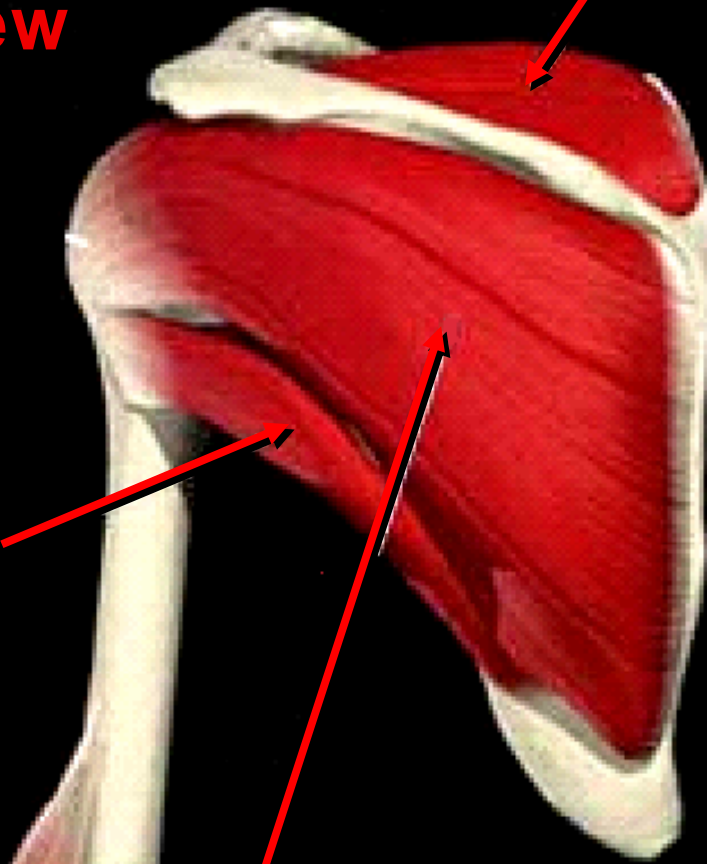
The Rotator Cuff Muscles

Rear View

Supraspinatus

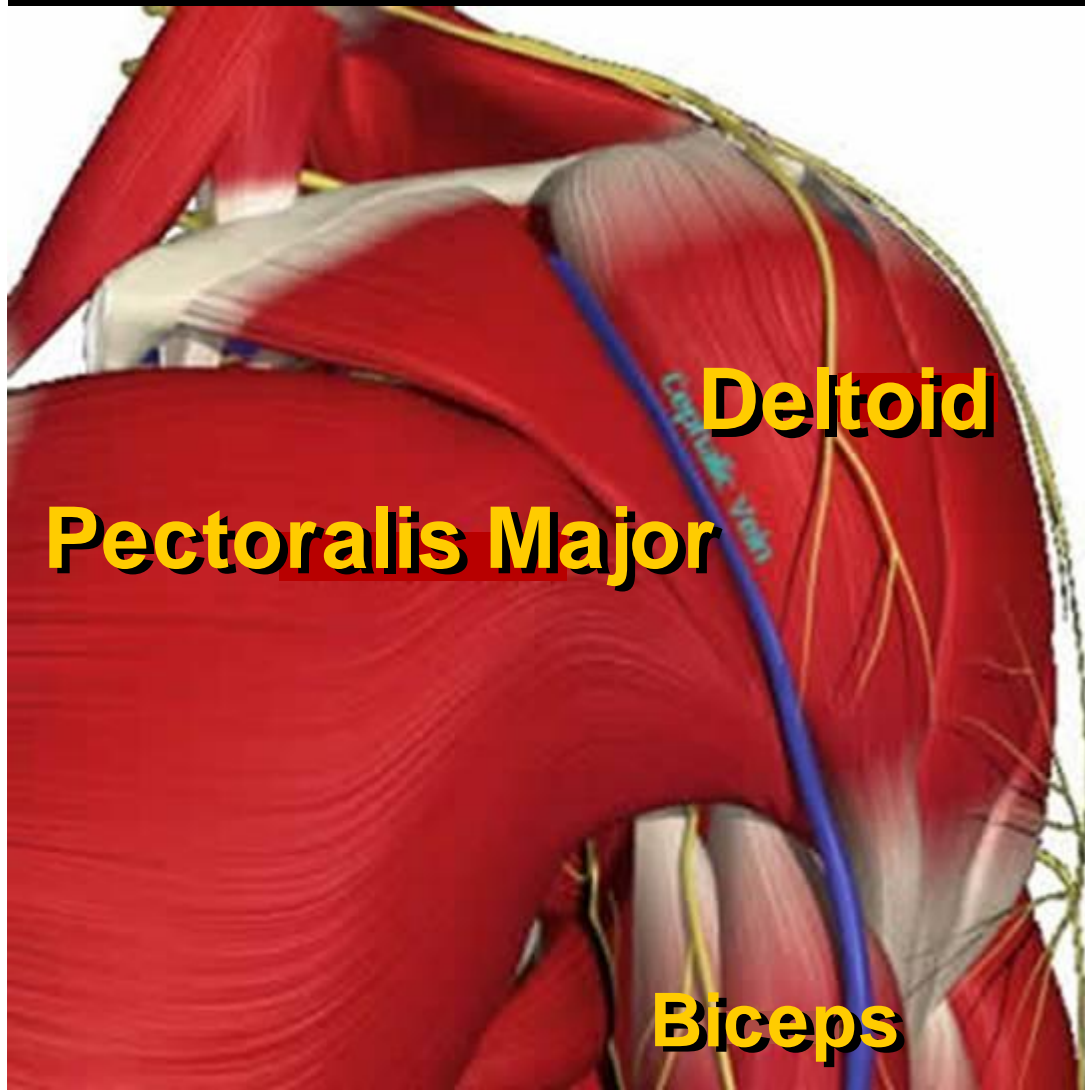
Teres Minor

Infraspinatus



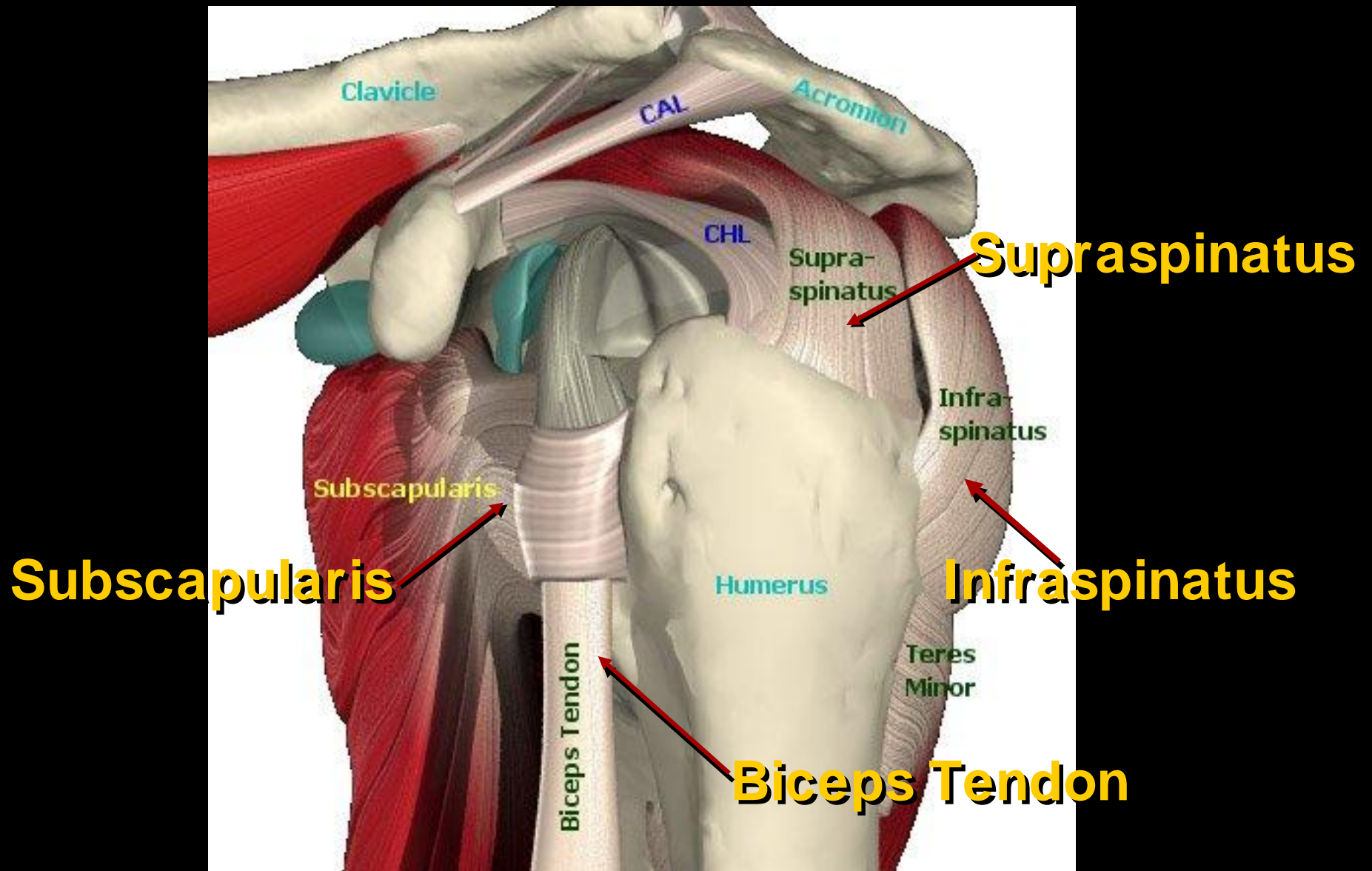
Subscapularis
Front View

Dynamic Stabilizers of the Shoulder



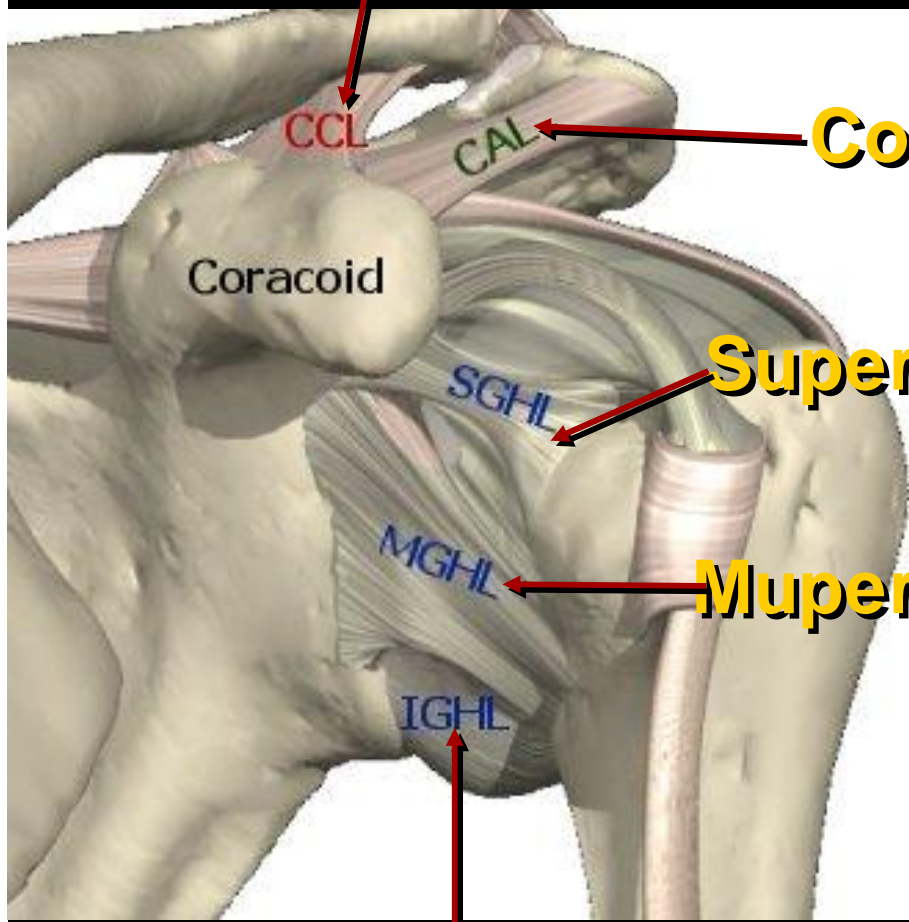
Dynamic Stabilizers also Include the superficial muscles that surround the shoulder giving the arm movement.

Major Tendons of the Shoulder



Major Ligaments of the Shoulder

Loracoclavicular Ligament



Coracoacromial Ligament

Superior Glenohumeral Ligament

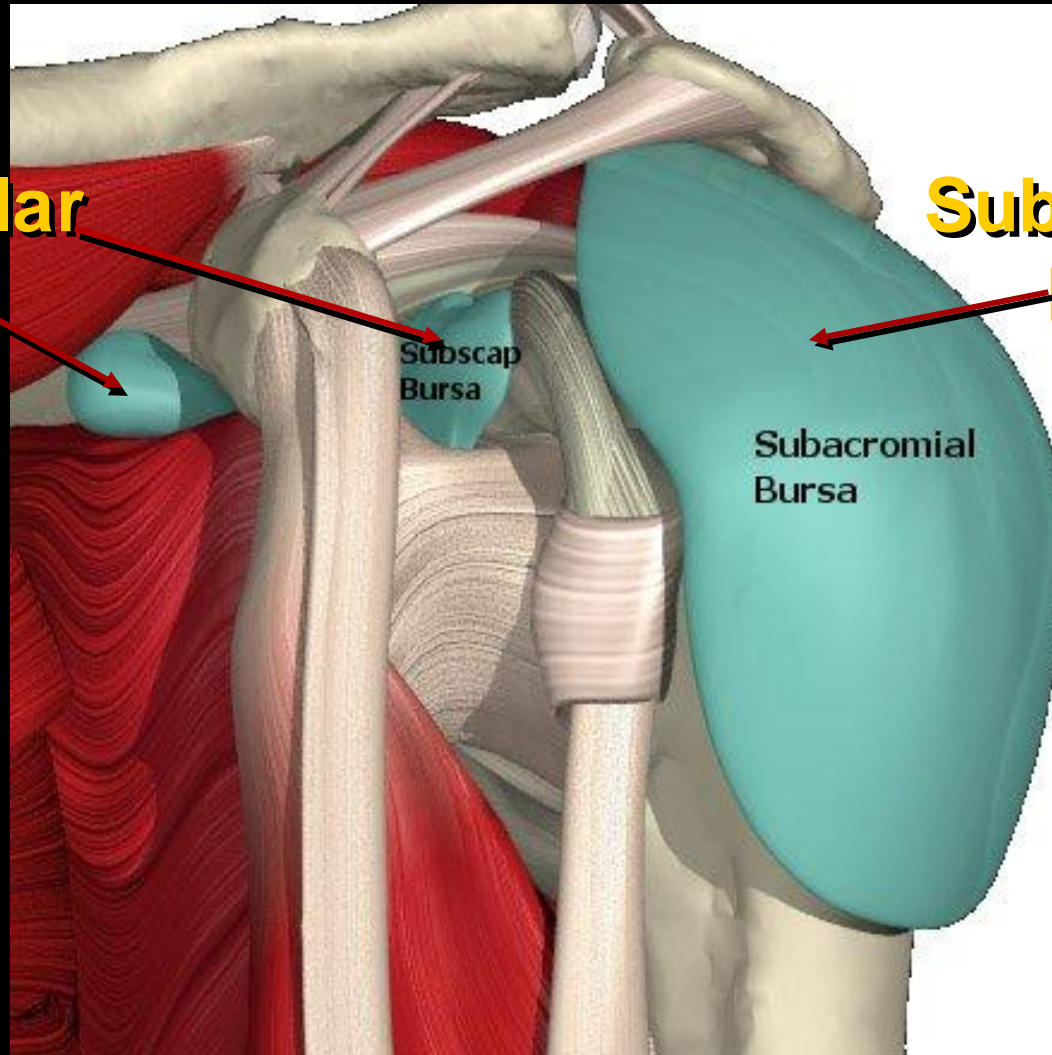
Muperior Glenohumeral Ligament

Inferior Glenohumeral Ligament

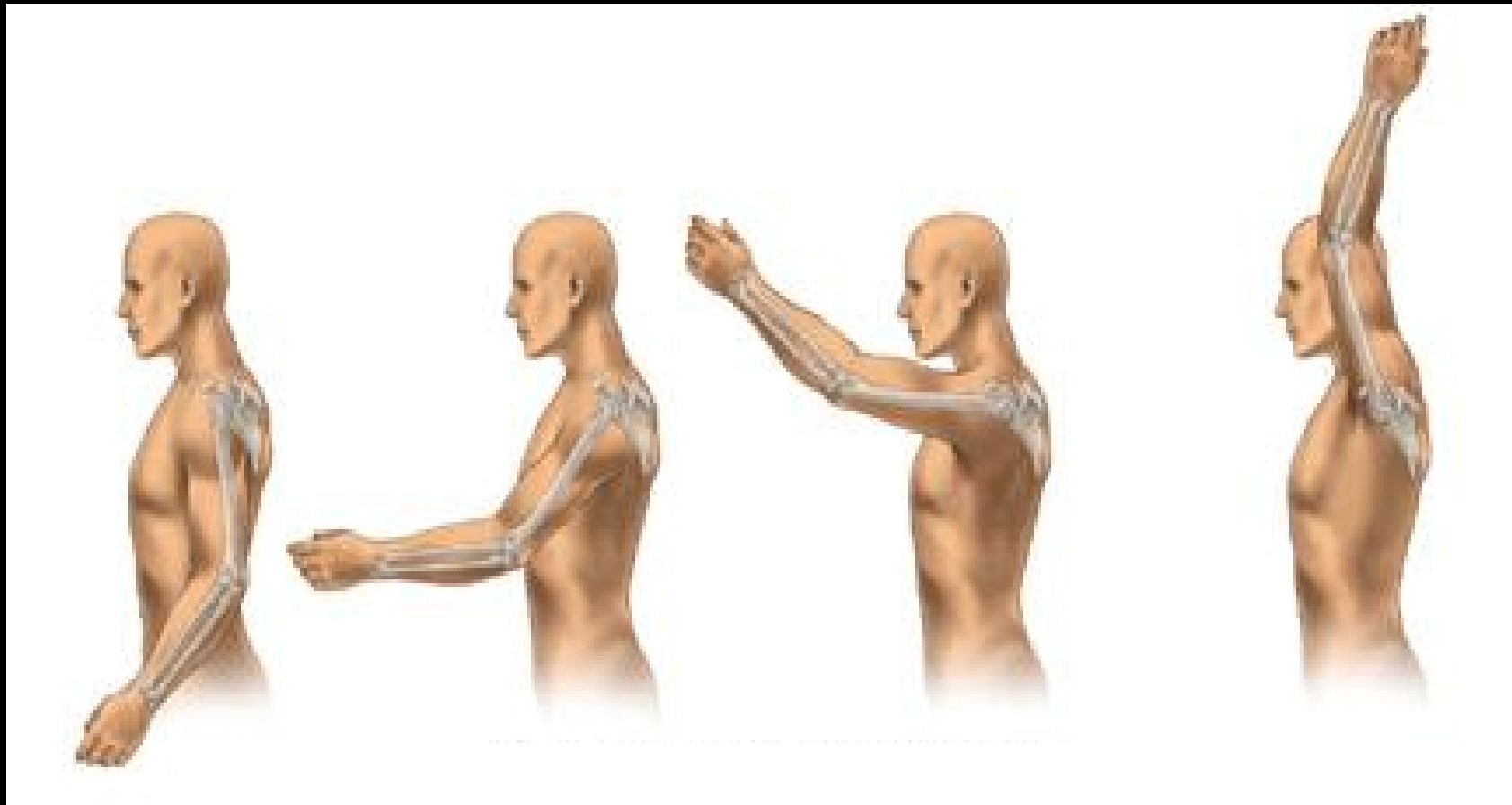
Major Bursa of the Shoulder

Subscapular Bursa

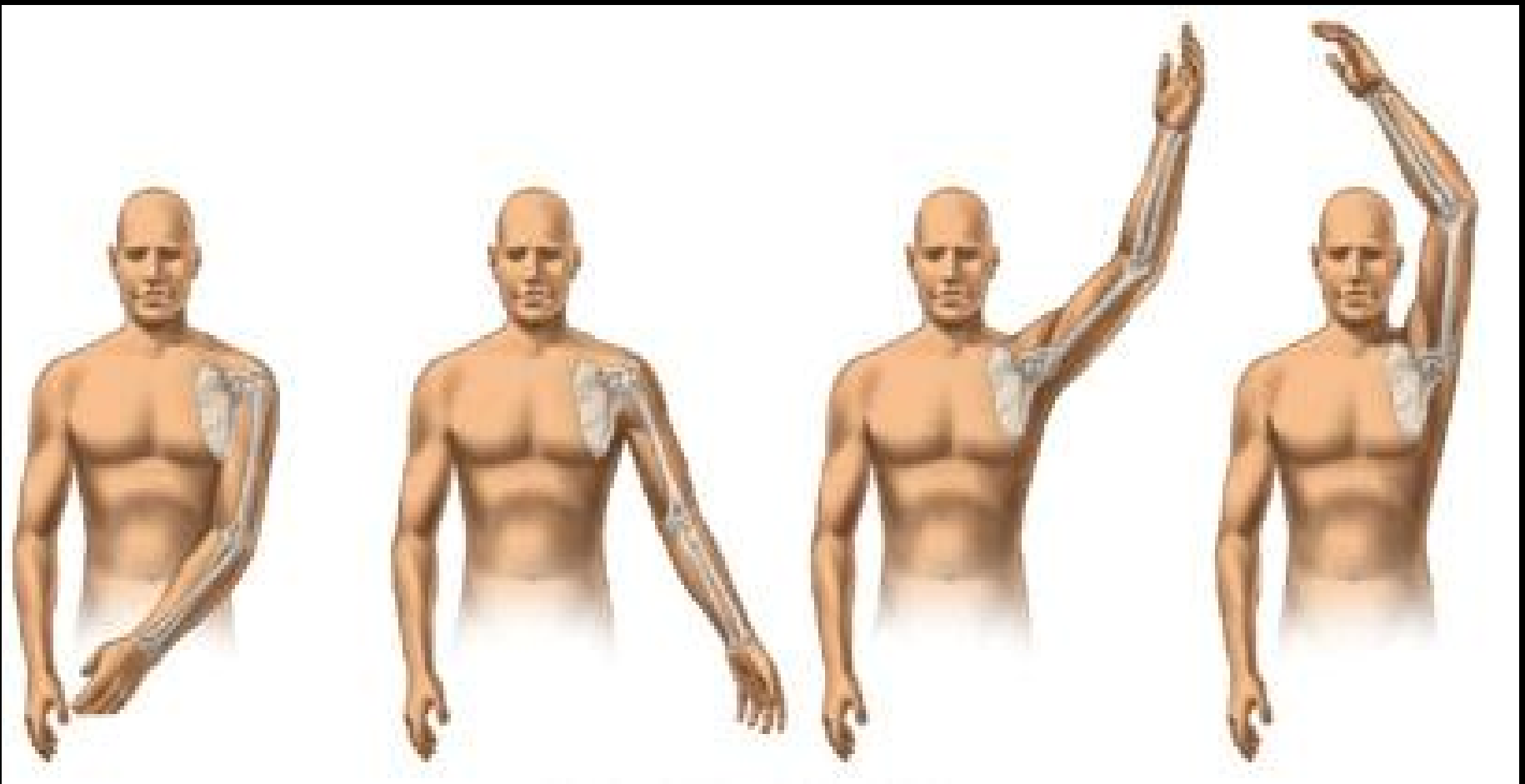
Subacromial Bursa



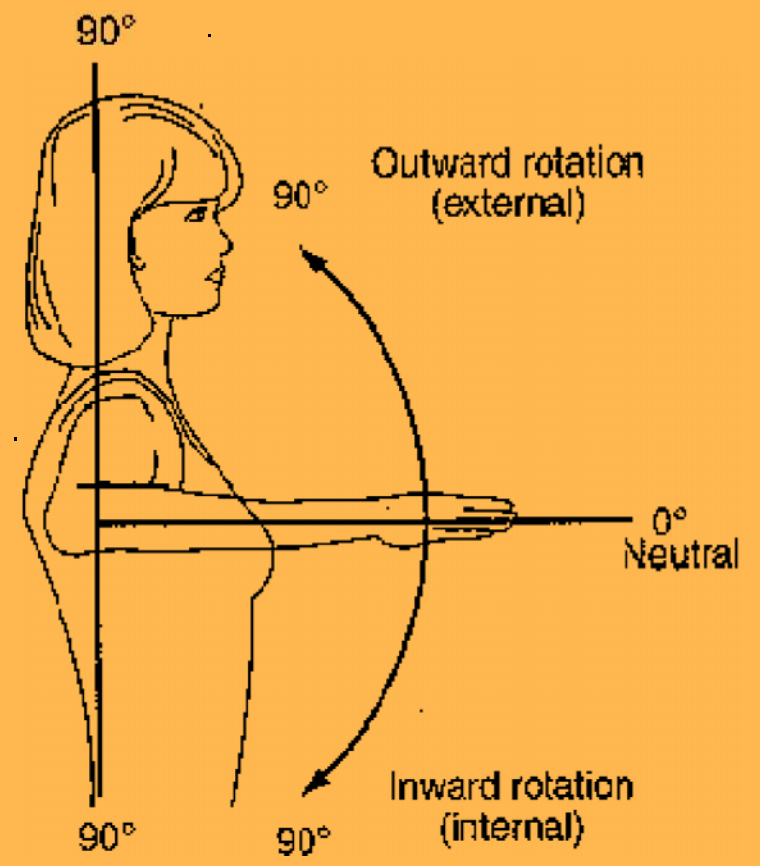
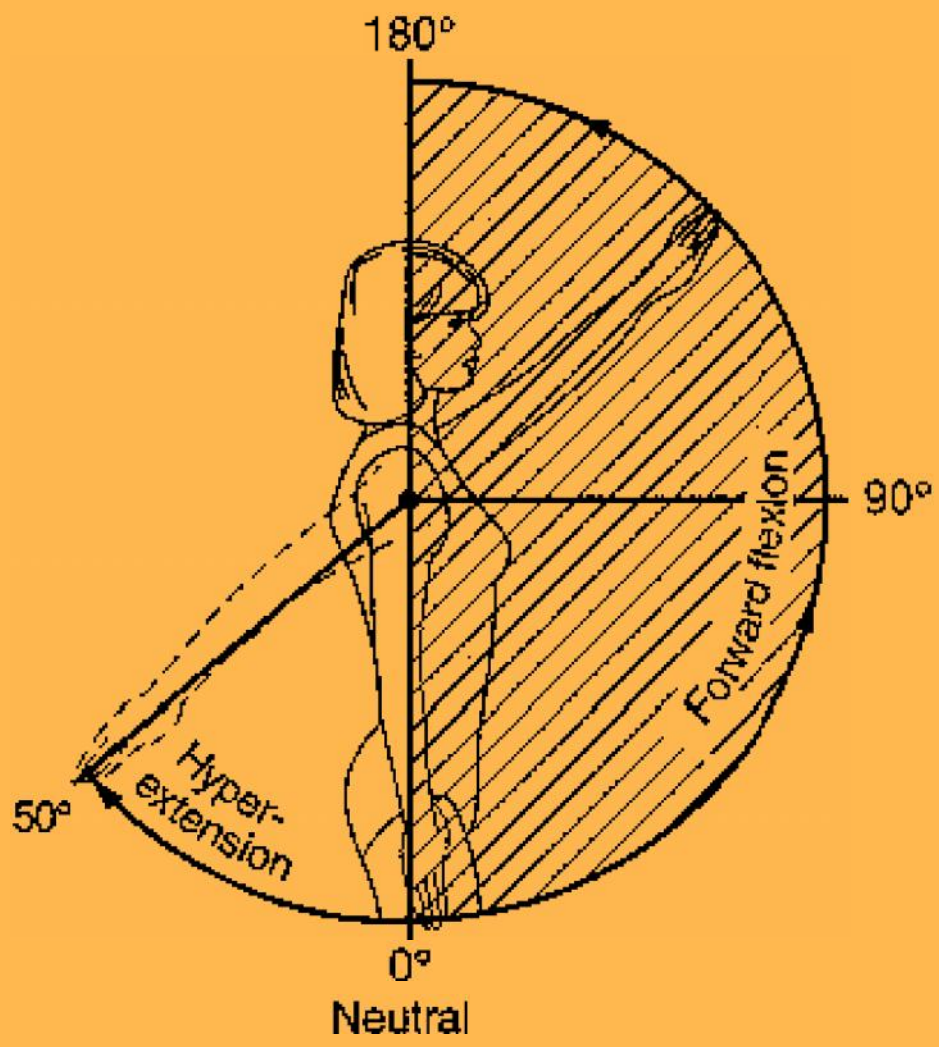
Normal Range-of-motion of the Shoulder: Flexion



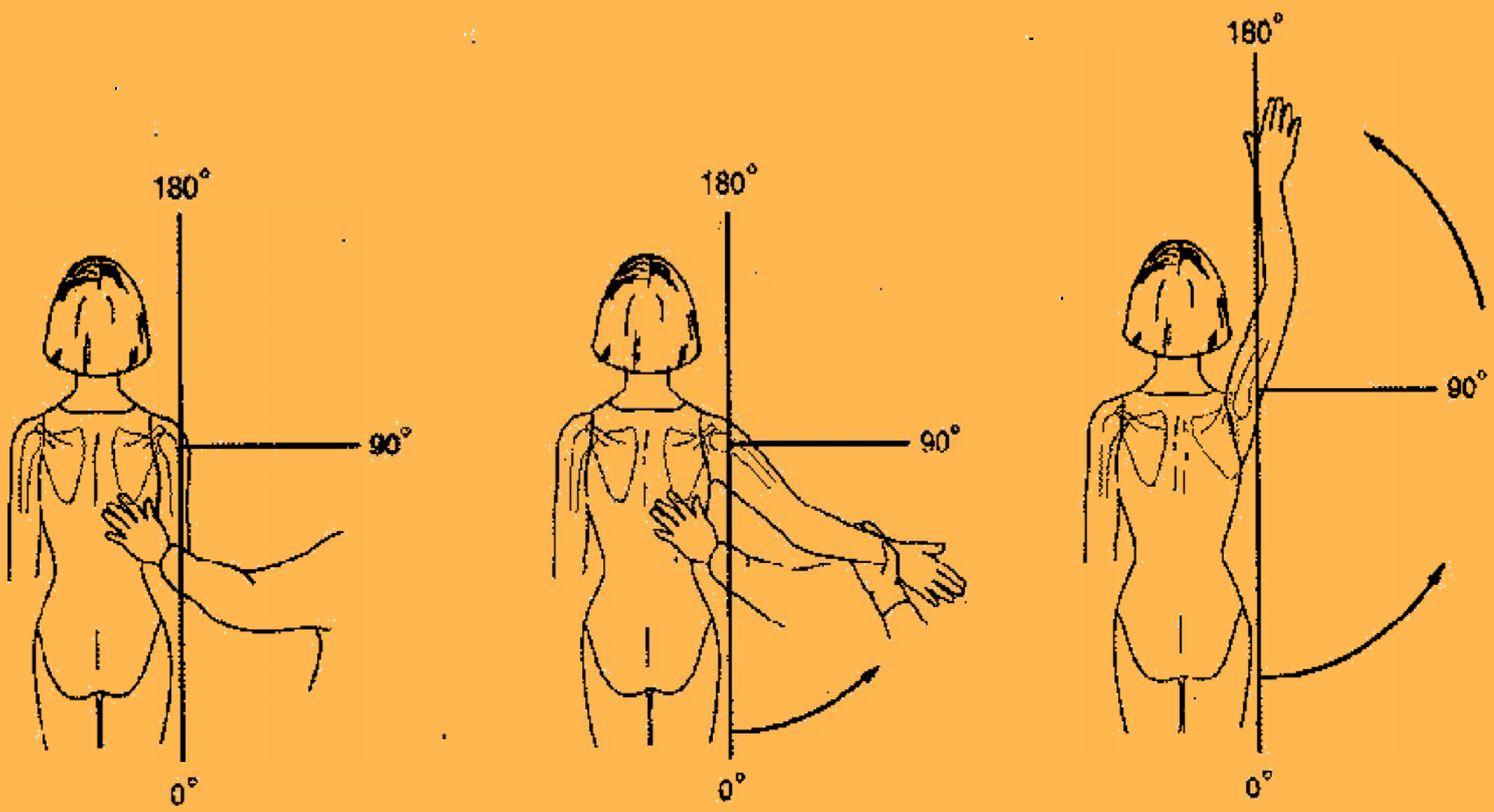
Normal Range-of-motion of the Shoulder: Abduction



Range-of-motion of the Shoulder

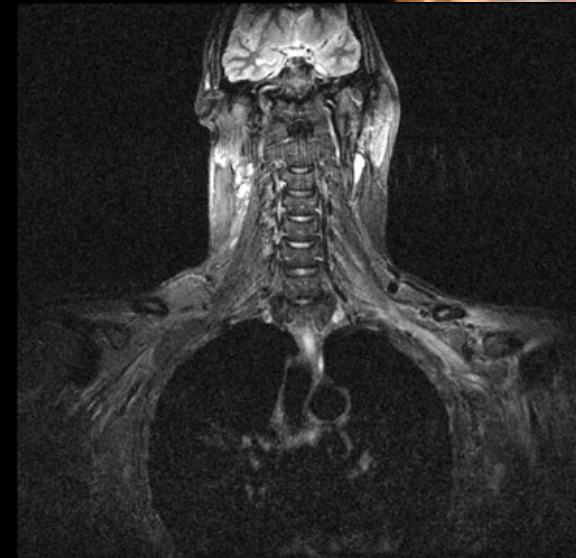
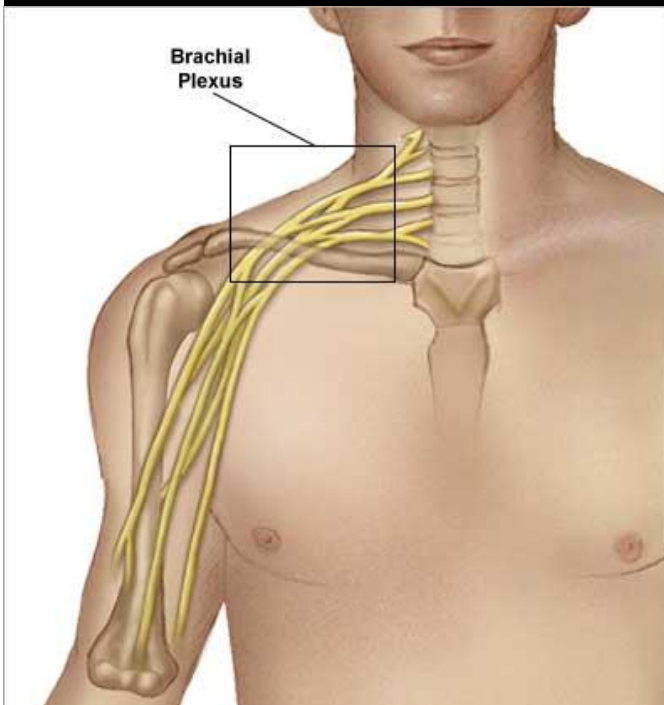
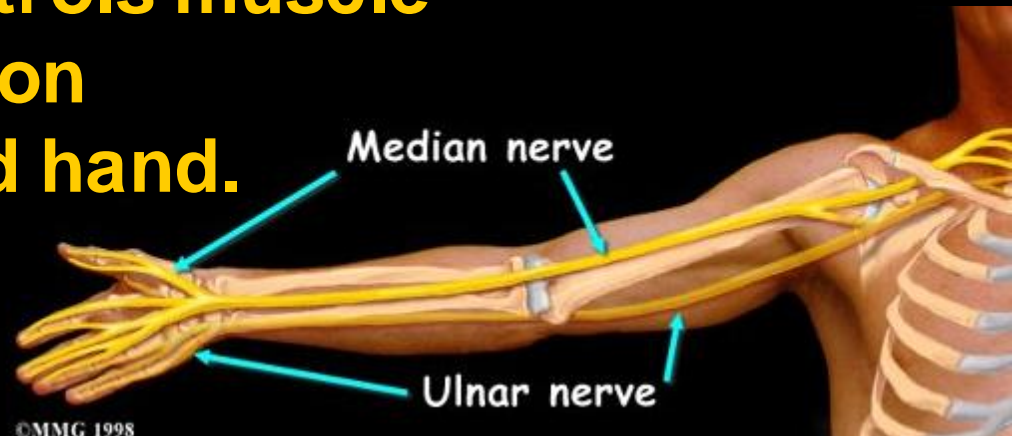


Range-of-motion of the Shoulder

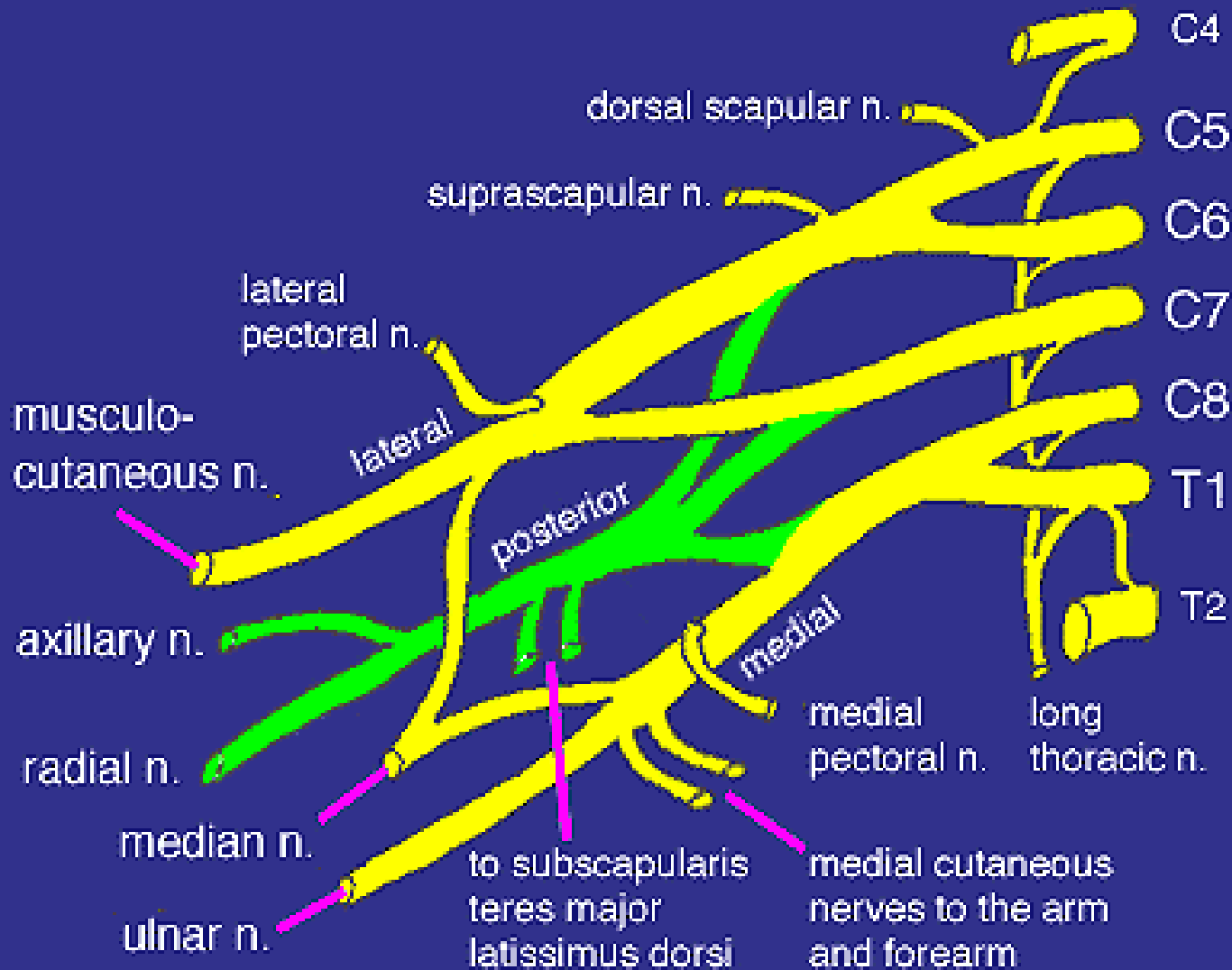


The Brachial Plexus

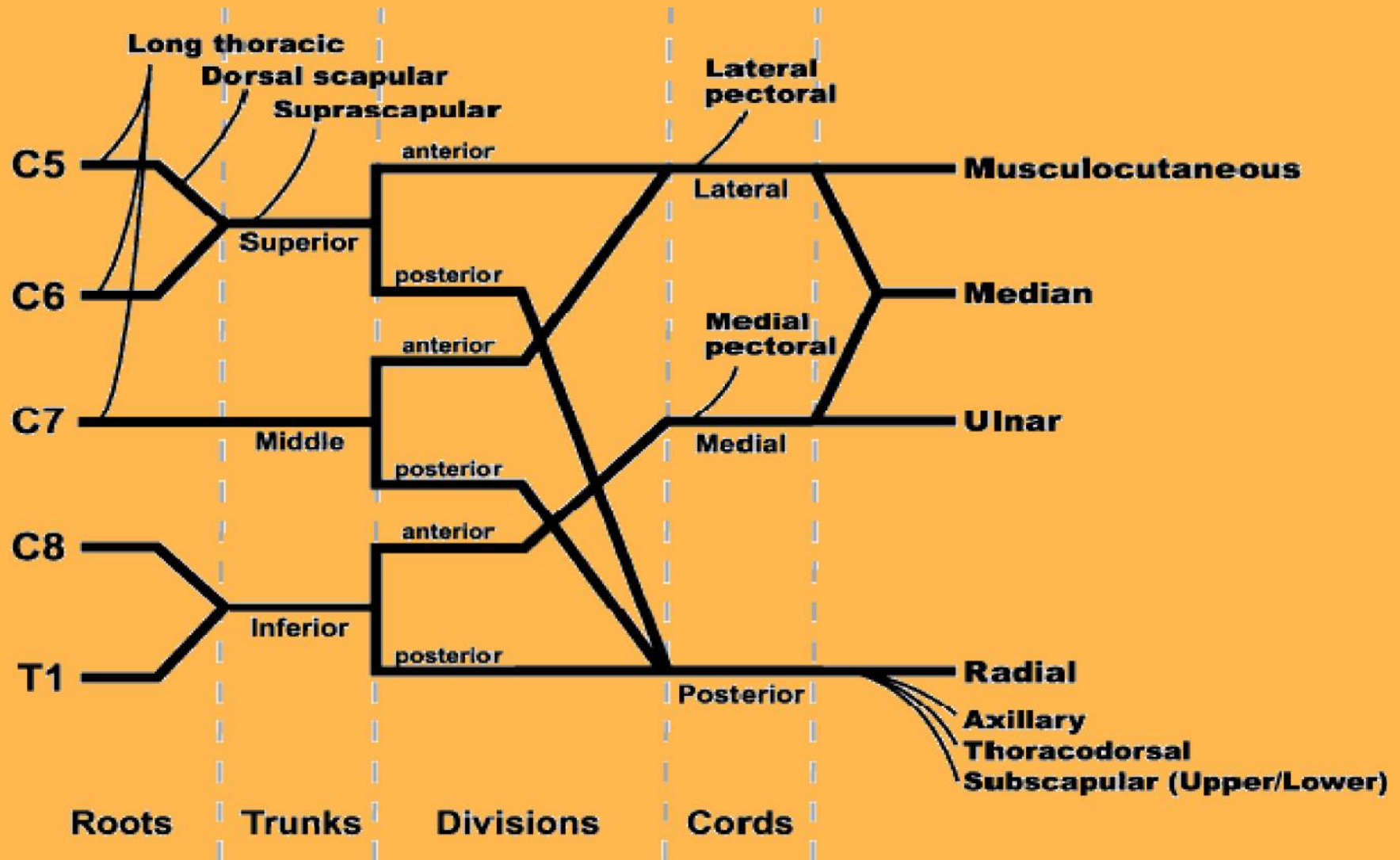
The brachial plexus is a complex network of nerves that comes from the spinal cord and controls muscle movements and sensation in the shoulder, arm and hand.



The Brachial Plexus



The Brachial Plexus Schematic



CYMATHERAPY ORTHOPEDIC SOLUTIONS



*Copyright © 2007 Elizabeth Bauer for
Cymatherapy International. All Rights Reserved.*